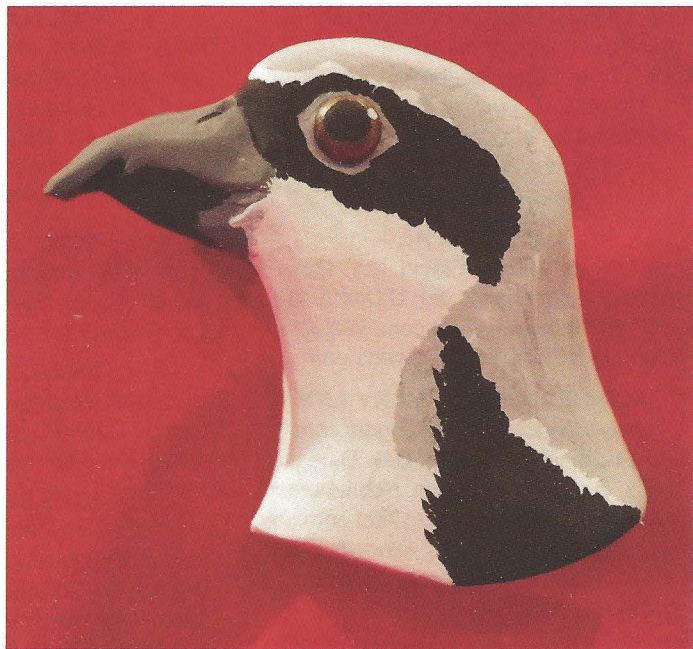
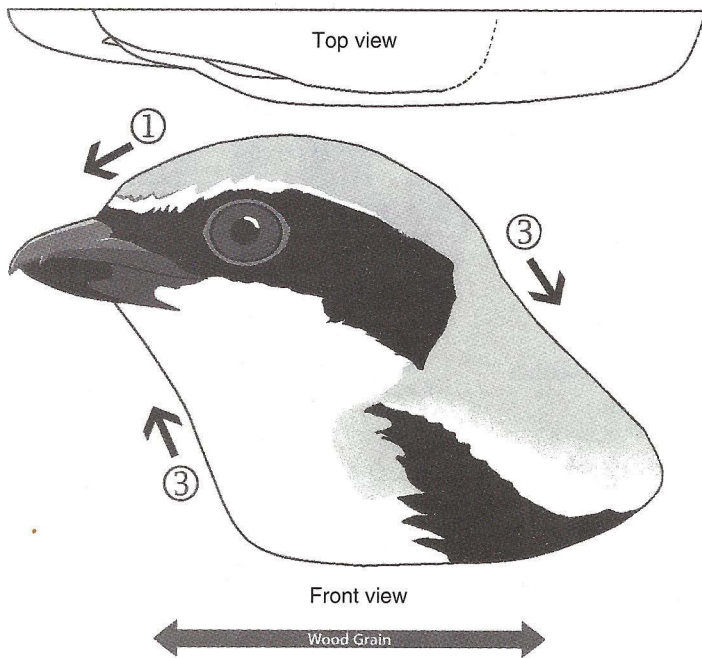


Carve a loggerhead shrike kerchief slide

By **BOB REITMEYER AND DON SELF**

LOGGERHEAD shrikes are predatory songbirds that kill and dismember the insects, birds, snakes, and other small animals they prey upon. They perch on fences, wires, and tree branches looking for a meal rather than flying high like large birds of prey. Shrikes are unique in that they hang their kills on long tree thorns and fence barbs for later consumption. Loggerhead shrikes sometimes attack and carry off prey larger than themselves.



Trace the pattern and cut from a 1/2" piece of basswood or soft white pine.

1. Carve the beak to a point. Note the top beak overhangs the lower beak and has a little tooth as shown in the front and top views.

2. Being careful of the wood grain, round off the head as shown in the side view.

3. Round the neck/chest from the bottom to the top. Round off neck from top to bottom.

4. Carve a circle for the eye or add a wood button. Paint it dark brown, and add a black pupil and a white dot for a highlight.

5. Sand smooth and paint as shown in white, gray, and black.

6. For a kerchief slide, glue on a wood back with a 5/8" hole cut square or round. ■

For other basswood kerchief blanks, instructions, and carving tools and sharpeners, visit Bob Reitmeyer's website at www.whittlerbob.com.